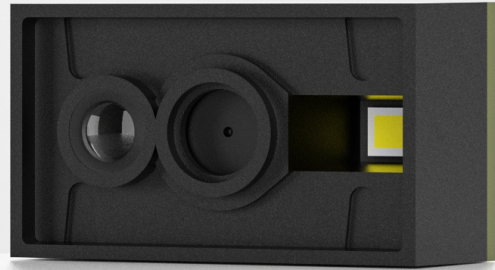
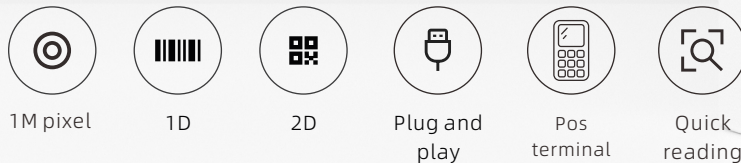


2D SCAN ENGINE MODULE HC-1210

- 1 Million images 1280(H)*800 (v)pixels
- 12Pin Wire connection diagram
- Can read all 1D/2D/Dotcode barcode on the screen and paper
- Can work with Win XP/7/8/10,iOS,Android system
- Embedded in various application device: scanner, pos terminal, cashiers, etc.

APPLICATION

Mainly used in commerce, health care, tobacco, some industries, etc



HC-1210 TECHNICAL SPECIFICATION

| | | | | |
|---|---|---|--|---|
| OS Windows / iOS / Android | Image Sensor CMOS | Image(Pixels) 1280(H)*800 (v)pixels | light source Aiming: 625 nm LED; illumination:4000K LED | Scan Mode Handhand (Manual) / Handfree (Automatic) |
| FPS Frame Rate 60fps/s | Scan accuracy ≥4mil @Code 39, PCS=90% | Print Contrast ≥25% | Visual Indicator Buzzer | Interface TTL-232,USB(HID-KBW / Virtual serial port) |
| Scan Angle Elevation angle ± 55° Tilt angle 360° Declination±55° | Field of view 34° horizontal, 29° vertical | Dimension H x W x L 26 x 13.3 x 15(mm) | Weight 4.3g | Case Material ABS |
| Cable Standard 51.5CM straight | Power parameter Input Voltage: 3.3VDC±10% Working current: 170mA (Typical value) Standby: USB 25mA; Serial port 2uA | Firmware Update Computer online upgrade | Scan distance EAN-13:40mm-350mm (13mil) Code39: 40mm-230mm (5mil 10 bits) QR Code: 40mm-330mm (20mil 16bits) | |
| Safety regulations CE (EN 55032:2015; EN 55035:2017), ROHS, BIS, EN62368-1:2014+A11:2017 FCC PART 15 CLASS B | Environmental parameters Operating Temperature: -20°C~+ 60°C Working Humidity: 5% to 95% relative humidity, non-condensing Storage Temperature: -40°C~+70°C Electrostatic protection: ±8 kV (Direct discharge) Ambient brightness: 0~100,000Lux | | | |

Decoding Capability

- 1D: EAN,UPC,Code 39,Code 93,Code 128,UCC/EAN 128, CodabarInterleaved 2 of 5, ITF-6,ITF-14,ISBN,ISSN, MSI-PlesseyGS1 Databar, GS1 Composite Code,Code 11,Industrial 25,Standard 25,Plessey, Matrix 2 of 5, etc.
- 2D: QR Code, Data Matrix, PDF417, Aztec, Maxicode, GS1 DataBar stack, etc.